



IF IN DOUBT ASK  
DO NOT SCALE

A

B

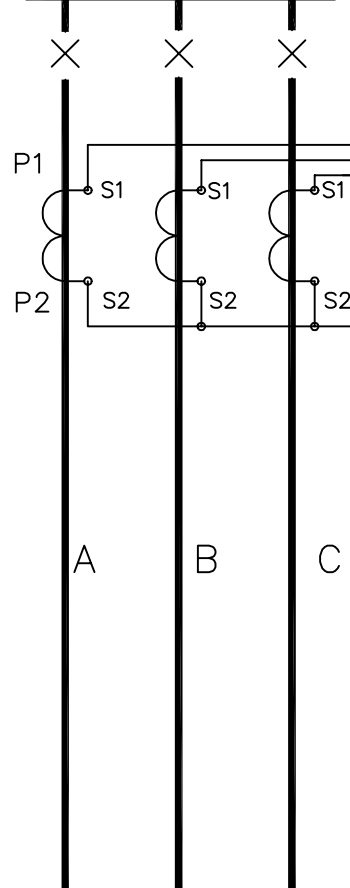
C

D

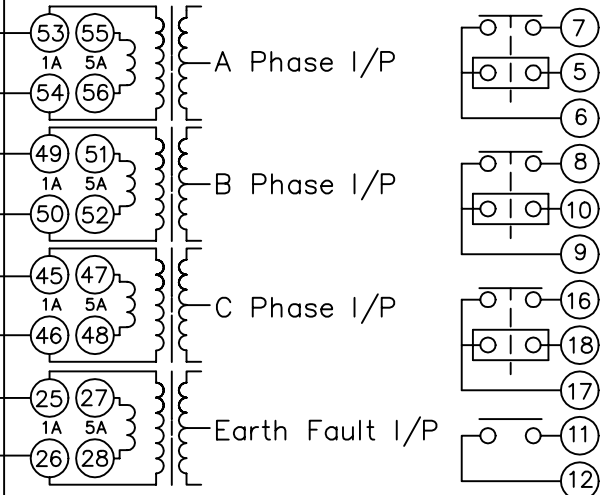
E

F

BUSBARS



DCD41x B R6 Case Size



RELAY 1

RELAY 2

RELAY 3

RELAY 4

RELAY 5

RELAY 6

RELAY 7

RELAY 8

RELAY 9

RELAY 10

RELAY 11

+ STATUS I/P 5

+ STATUS I/P 4

+ STATUS I/P 3

+ STATUS I/P 2

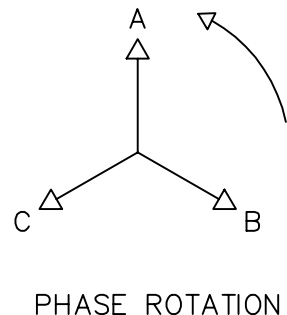
EXPANSION PCB

D.C Auxilliary Input Volts

Earth

STATUS I/P 1

Fibre-Optic SMA Connectors  
TX  
RX



PHASE ROTATION

MATERIAL:

Dimensions in millimetres : Surface texture in micrometres.  
Machine where marked ✓  
For explanation of dimensions, tolerances, notes etc. see B.S.308.  
Limit on untoleranced unmachined dimensions ± \_\_\_\_\_  
Limits on untoleranced machined dimensions to B.S.4500;  
i.e. up to 6±0.1; over 30 to 120±0.3; over 315±0.8;  
over 6 to 30±0.2; over 120 to 315±0.5;  
General unmachined angular tolerance ± \_\_\_\_\_

Finish:

Treatment:

Title:

TYPICAL SCHEMATIC DIAGRAM FOR 3 PHASE + E/F  
DCD OVERCURRENT RELAY

**Reyrolle Protection  
Hebburn.**

Original Scale.  
NTS

First used on:

Similar Articles: 2434W10035

Supersedes:

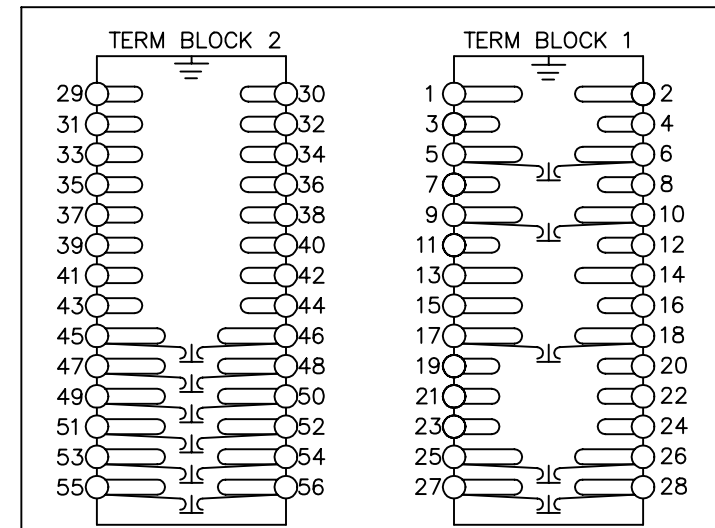
Drq. No.  
**2434W10014**

NOTES

- 1 CT CIRCUITS ARE SHOWN CONNECTED TO RELAY 1 AMP TAP. USE ALTERNATIVE TAP FOR 5AMP RATED CTs.
- 2 CT & EARTH CONNECTIONS ARE TYPICAL ONLY.
- 3 FOR TERMINAL DIAGRAM SEE 2434W20001 (A2)
- 5 DRG SHOWS OPTION A (7 O/P. 1 I/P)  
DRG SHOWS OPTION B (11 O/P. 5 O/P).

**NOT SUBJECT TO UPDATE  
ONCE COPIED / PRINTED  
OR DOWNLOADED**

TERMINAL BLOCKS VIEWED FROM REAR



KEY  
1 Short Terminals  
2 Long Terminals  
3 CT Shorting Links

3	20/10/97	MN434/103
2	12/11/96	MN434/42
1	21/10/96	CHANGE NOTED

DRAWN M LEASK	CHECKED	APPROVED R.D.WATSON	DATE 23/07/02	IE	OPS	PCP	Purch.Spec. TQ	EAC	CE	STD	A3
---------------	---------	---------------------	---------------	----	-----	-----	----------------	-----	----	-----	----